



# Night Classes

*You will be trained to speak Japanese with confidence by having more practical conversations in the class.*

The night classes at Japanese International School, which have welcomed more than 600 international students since 2015 and received great feedback, were renewed in July 2024!  
In addition to practical conversation lessons, there are many programs such as experiencing Japanese seasonal culture and events designed to help you feel at home in Japan!  
Let's start learning at J International School!



## Course Overview

**Start of courses** ( January / April / July / October )

### Study hour

45 min × 3 classes

18:00~18:45  
18:55~19:40  
19:50~20:35

### Class

Beginner I & II  
Intermediate & Advanced (combined)

### Tuition Fee

including textbooks  
and materials

**3months**

**156,000yen**

\*The fee for Working Holiday visa holders is ¥136,000.

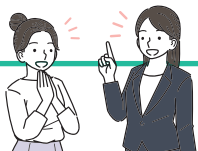
## International Exchange Party

Communicate with the Japanese using the Japanese language you learned.



# Night Classes Curriculum

In addition to Japanese language classes, we offer a unique curriculum that helps you enjoy life in Japan.  
We're here to support your journey!



Japanese language  
classes



It's more than just learning Japanese as a language.  
Through real cultural experiences,  
let's learn about Japan's unique features and culture!

## 【 Let's experience ! 】

No.1 Popular Japanese Home Cooking  
No.1 J-POP you are interested in ( want to learn )

## 【 Let's learn ! 】

Characteristics of Japan and Osaka  
What are "common" & "uncommon" customs, and the mysterious unspoken rules in Japan?



## Let's learn more about Japan experiencing seasonal cultures.

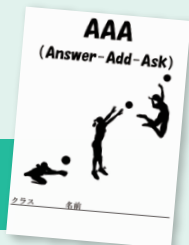
April Tea Ceremony Experience  
July Wearing "Yukata" (Summer Kimono) and Bon Dance  
October Learning Shrine Traditions and Making New Year's Cards  
January "Setsubun" (Bean-Throwing Event) , "Fortune Sushi Roll",  
"Karuta" and "Kakizome"(New Year's Calligraphy)

\* The content of cultural classes is subject to change.



## The Practical Class

### Beginner I&II



Our original teaching material "AAA" is used in the class!  
This is an original conversation training where you can  
study grammar and vocabulary at the same time while  
using Japanese. Learning through "AAA", you will be able  
to keep having an exchange of conversation.

### Intermediate & Advanced



Using the original materials of "Japanese In Dramas" and  
"3/2/1", students are trained to use more appropriate  
Japanese for various situations. We also offer Kansai-ben  
(dialect) lessons to help you feel closer to the people of  
the Kansai region.



International Lifelong Learning Research Foundation /  
Certified Proper Institution by the Ministry of Justice's Immigration Services Agency

# J 国際学院

Japanese International School

〒550-0012 大阪市西区立売堀 1-1-3  
E-mail : [info@jcom-ies.co.jp](mailto:info@jcom-ies.co.jp)  
HP : <http://jcom-ies.co.jp/e/>

