



Working Holiday Classes

You will be trained to speak Japanese with confidence by having more practical conversations in the class.

The Working Holiday Classes of Japanese International School, which have welcomed more than 600 international students since 2015 and been well received, are renewing from July!
In addition to practical conversation opportunities, there are many programs such as experiencing Japanese seasonal culture and events that will be useful for living in Japan!
Let's start learning at J International School!



Course Overview

Start of courses (January / April / July / October)

Study hour

45 min × 3 classes

18:00~18:45

18:55~19:40

19:50~20:35

Class

Beginner I & II
Intermediate · Advanced

Tuition Fee

3months ~~156,000yen~~ ↓

136,000yen

*This price is for Working Holiday Visa holders.

International Exchange Party

Communicate with the Japanese using the Japanese language you learned.



Firmly support students' life!

Provide part time job

ATEC is an employment agency for international students. They will support J International School students to find the best part-time job that fits their Japanese level. They can also introduce you a part-time job at our group Nursing Care Centre.

*By law, Working Holiday Visa holders are subject to income tax of 20.42% of their income.



Health Support

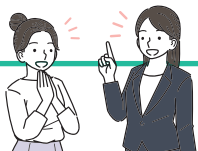
Based on Free/Low-cost Medical Treatment Program, if you are qualified the conditions, J International School students can receive low-cost or free medical treatment.

* Please ask the staff for details.



Working Holiday Classes Curriculum

In addition to Japanese language classes, we offer a customized program for you to get the best out of Japanese life.
Stay & live safely, enjoy your life in Japan! You will have our full support.



Japanese language classes



It's more than just learning Japanese as a language.
Through real cultural experiences, you can truly discover the Japanese features and uniqueness of culture.
Let's learn information that will help you in your everyday life!
This is going to be very helpful for your life in Japan!

【 Let's experience ! 】

No.1 Popular Japanese Home Cooking
No.1 J-POP you are interested in (want to learn)

【 Let's learn ! 】

Characteristics of different regions of Japan.
What is "common" & "uncommon" in Japan and mysterious unspoken rule!?



Let's learn more about Japan experiencing seasonal cultures.

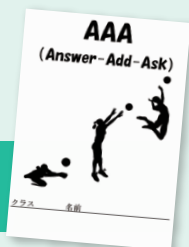
April Tea Ceremony Experience
July Wearing "Yukata" (Summer Kimono) and Bon Dance
October Learning Shrine Traditions and Making New Year's Cards
January "Setsubun" (Bean-Throwing Event) , "Fortune Sushi Roll",
"Karuta" and "Kakizome"(New Year's Calligraphy)

* The content of cultural classes is subject to change.



The Practical Class

Beginner I&II



Our original teaching material "AAA" is used in the class!
This is an original conversation training where you can study grammar and vocabulary at the same time while using Japanese. Learning through "AAA", you will be able to keep having an exchange of conversation.

Intermediate & Advanced



Using the original materials of "Japanese In Dramas" and "3/2/1", students are trained to use more appropriate Japanese for various situations. We also offer Kansai-ben (dialect) lessons to help you feel closer to the people of the Kansai region.



International Lifelong Learning Research Foundation /
Certified Proper Institution by the Ministry of Justice's Immigration Services Agency

J 国際学院

Japanese International School

〒550-0012 大阪市西区立売堀 1-1-3
E-mail : info@jcom-ies.co.jp
HP : <http://jcom-ies.co.jp/e/>

